

## ANNAPURNA COLLECTION

The Annapurna Vertical profile is the perfect solution for facades, fences, lattices, and visual partitions. Versatile and functional, it can be used to cover walls or ceilings, both outdoors and indoors, providing a flawless finish in any architectural project.

Tarimatec vertical profiles are known for their easy installation, creating structures with sophisticated designs and a unique visual lightness. Additionally, to ensure greater structural consistency, the slats can be internally reinforced with metal profiles.

With a combination of aesthetic and functional advantages, Tarimatec slat systems are the perfect ally for developing innovative and distinctive architectural designs.

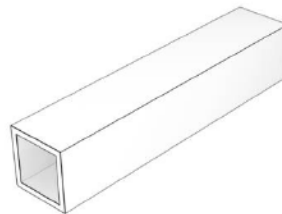
## COMPOSITION

Manufactured with Eco-fiber Composite, a WPC composed mainly of polyvinyl chloride, 50% rice husk and 40% limestone and Polyvinyl chloride (PVC).

It contains 33% recycled material such as WPC recovered from scraps and waste chips obtained in the manufacturing process, in which 60% renewable energy is used.

## DIMENSIONS / PACKING

PANEL SIZE: 1,5 x 1,5 x 120" (width / height / length)  
Supplied individually for flexible installation



## CHARACTERISTICS

- High resistance to impact and abrasion
- Fire-resistant
- Does not crack, splinter, or chip
- No additional treatments required
- Unaffected by insects and bacteria
- 100% recyclable and eco-sustainable
- Long durability
- Slip-resistant surface
- Low maintenance
- European manufacturing

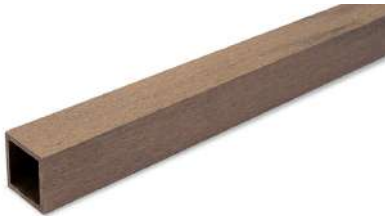
COLORS (natural finish)



HORIZON LUNA



HORIZON SILVER



HORIZON IPE



HORIZON WENGUE



HORIZON ROBLE



HORIZON NOGAL



HORIZON POLAR

ROOM SCENES

